



123 West Main Street, Suite 700  
Durham, NC 27701  
919-560-3380  
www.ncids.org

# Indigent Defense Services

## **FY02 District Court Fee Application Study**



• • • • • • • • • •

### *Summary of Findings*

November 2001



# FY02 District Court Fee App Study

## Summary of Study Results

### Key Findings

- 1) Both in the aggregate and by type of charge, Indigent defense attorney fees and hours worked per case were not as variable as expected: (see Attachment A)
  - 80% of all fee apps paid \$80/hour or less, 66% paid \$75/hour or less (see Attachment A)
  - 80% of all fee apps billed for 4 or fewer hours (see Attachment A)
  - 80% of all fee apps paid a total fee of \$300 dollars or less (see Attachment A)
- 2) Wake County consistently paid approximately \$60/hours for all types of charges. (see Attachment B)
- 3) Indigent attorneys consistently proposed higher rates and estimated cases take more hours than was found to be the case in the 1<sup>st</sup> quarter FY02 District Court fee app study.

### Description

The study analyzed fee apps from the 1<sup>st</sup> quarter of FY02 for three counties selected to represent cost of living differences in North Carolina: Wake (high-cost), Iredell (mid-cost), and Columbus (low-cost). When the population *n* was small, fee apps from counties in the same District were included. When the population *n* was large the data was sampled. A total of 2,262 fee apps were analyzed.

### Fee App Average Hourly Rate, Hours per Fee App, & Total Fee per “Case”

There was less variation in payment practices than expected. Approximately 66% of all fee apps paid an hourly rate of \$75 or less. Almost 80% paid \$80/hour or less. Eighty percent of all fee apps billed for four or fewer hours and 80% of all fee apps paid a total fee of \$300 or less.

The average hourly rate fell between \$60 and \$70 an hour for most types of charges.

Indigent Fee App Average Hourly Rate, Hours Worked, & Total Fee by Type of Crime: District Court, Sample Counties				
Charge	No. of Fee Apps (All Counties)	Avg Rate per Fee App	Avg Hrs per Fee App	Avg. Total Fee App
District Felony	562	\$69	3.5	\$241
Misdemeanor	611	\$72	3.0	\$204
DWI	98	\$71	3.3	\$228
Non-Support/Contempt	209	\$81	3.5	\$224
Probation Violation	54	\$70	2.6	\$180
Involuntary Commitment	51	\$111	0.9	\$87
Withdrawals*	54	\$73	2.3	\$170
Juvenile Delinquent	361	\$75	3.0	\$218
Abuse/Neglect/Depen.	214	\$81	5.1	\$402
Incompetence	71	\$64	3.4	\$220
Guardian Ad Litem	10	\$73	9.6	\$770
Other	12	\$68	1.5	\$103
Unknown	9	\$64	2.3	\$273
<b>All Charges</b>	<b>2,262</b>	<b>\$72</b>	<b>3.4</b>	<b>\$237</b>

\* Withdrawal Fee Apps are not included in Total No. of Fee Apps because it is a disposition not a charge.

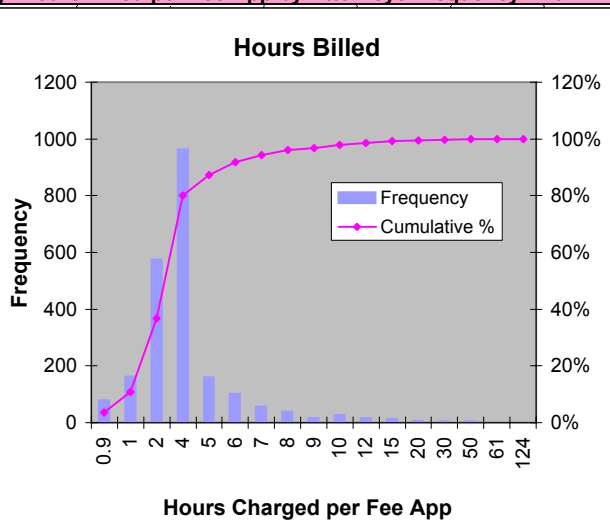
### Suggested vs Actual Case Fee Rates and Hours

Both in the aggregate and by type of charge, Indigent attorneys consistently proposed higher rates and estimated cases take more hours than was found to be the case in the 1<sup>st</sup> quarter FY02 District Court fee app study. (see Attachment C)

## Attachment A

**FY02 District Court Fee App Study: Hours Billed per Fee App by Attorneys Frequency Char**

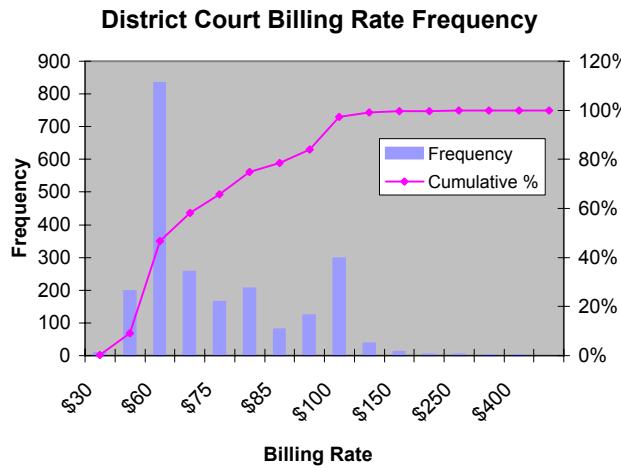
Hours Billed	Freq.	% All Apps	Cumulative %
0.9	80	3.59%	3.59%
1	163	7.32%	10.92%
2	575	25.83%	36.75%
4	964	43.31%	80.05%
5	160	7.19%	87.24%
6	101	4.54%	91.78%
7	56	2.52%	94.29%
8	39	1.75%	96.05%
9	15	0.67%	96.72%
10	27	1.21%	97.93%
12	16	0.72%	98.65%
15	13	0.58%	99.24%
20	7	0.31%	99.55%
30	4	0.18%	99.73%
50	4	0.18%	99.91%
61	1	0.04%	99.96%
124	1	0.04%	100.00%
<b>Total</b>	<b>2,226</b>	<b>100.00%</b>	



*Note: Most cases over 10+ hours are Neglect/Abuse/Dependency cases with a some Gal, JuvDel mixed in. A very few of these are misdemeanor or District Felony.*

**FY02 District Court Fee App Study: Billing Rate Paid per Fee App Frequency Char**

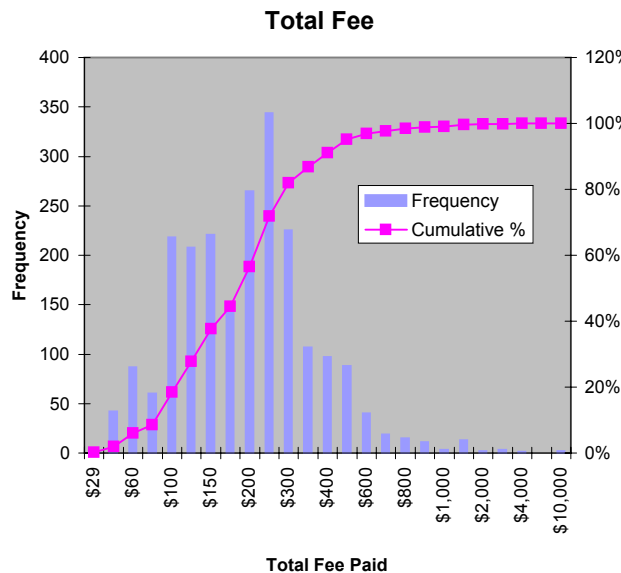
Bill Rate	Freq.	% All Apps	Cumulative %
\$30	8	0.36%	.36%
\$59	198	8.89%	9.25%
\$60	834	37.47%	46.72%
\$70	256	11.50%	58.22%
\$75	165	7.41%	65.63%
\$80	205	9.21%	74.84%
\$85	81	3.64%	78.48%
\$99	124	5.57%	84.05%
\$100	297	13.34%	97.39%
\$125	37	1.66%	99.06%
\$150	12	0.54%	99.60%
\$200	4	0.18%	99.78%
\$250	3	0.13%	99.91%
\$300	1	0.04%	99.96%
\$400	1	0.04%	100.00%
<b>Total</b>	<b>2,226</b>	<b>100.00%</b>	<b>100.00%</b>



*Note: In all but one case, the Billing Rates over \$120 are cases where total hours were <1 or just some fraction of an hour.*

**FY02 District Court Fee App Study: Total Fee Paid per Fee App Frequency Char**

Total Fee	Freq.	% All Apps	Cumulative %
\$29	3	0.13%	.13%
\$59	42	1.89%	2.02%
\$60	87	3.91%	5.93%
\$75	60	2.70%	8.63%
\$100	218	9.79%	18.42%
\$125	208	9.34%	27.76%
\$150	221	9.93%	37.69%
\$175	152	6.83%	44.52%
\$200	265	11.90%	56.42%
\$250	344	15.45%	71.88%
\$300	225	10.11%	81.99%
\$350	107	4.81%	86.79%
\$400	97	4.36%	91.15%
\$500	88	3.95%	95.10%
\$600	40	1.80%	96.90%
\$700	19	0.85%	97.75%
\$800	15	0.67%	98.43%
\$900	11	0.49%	98.92%
\$1,000	3	0.13%	99.06%
\$1,500	13	0.58%	99.64%
\$2,000	2	0.09%	99.73%
\$3,000	3	0.13%	99.87%
\$4,000	1	0.04%	99.91%
\$5,000	0	0.00%	99.91%
\$10,000	2	0.09%	100.00%
<b>Total</b>	<b>2,226</b>	<b>100.00%</b>	<b>100.00%</b>



*Note: Most of the casing costing \$700+ are Neglect/Abuse/Dependency cases with a some Gal, JuvDel mixed in. A very few of these are misdemeanor or District Felony.*

## Attachment B

FY02 District Court Fee App Study										
Average Total Hours per Case by Type of Crime and County, District Court, Sample Counties										
Charge	Avg Total Hours All Counties	Alexander	Davidson	Davie	Iredell	Bladen	Brunswick	Columbus	Wake	Average of County Average
DFel	3.48	2.25	3.65	3.54	3.29	2.23	14.85	3.90	3.17	4.61
DWI	3.26	2.00	3.77	2.30	2.95	3.00	2.97	2.18	3.59	2.84
GAL	9.58	60.70	1.75		2.00				6.53	17.74
Incom	3.40		4.73	2.50	2.10		3.43	1.25	3.42	2.90
InvC	0.92		0.92		1.22		1.32		0.68	1.03
JuvD	2.96	3.15	1.93	2.32	2.80	3.54	3.41	3.72	3.01	2.99
Mis	2.97				2.60		5.25	3.13	3.10	3.52
NAD	5.13	27.85	3.27	3.44	4.49	2.20	6.62	11.21	5.10	8.02
NonS	3.45	3.45	2.75	4.50	2.16	3.78	3.77	2.90	4.08	3.42
Oth	1.48			1.42				3.50	1.25	2.06
PV	2.63	1.10	3.45		2.53	4.70		2.25	2.67	2.78
Unk	2.34						3.50	1.70	2.25	2.48
Average of Averages	3.47	14.36	2.91	2.86	2.61	3.24	5.01	3.58	3.24	4.73

*Fel Brunswick, very small n of 10 had one very large case, skewing average (\$9,000 case)*

FY02 District Court Fee App Study										
Average Hourly Bill Rate by Type of Crime, District Court, Sample Counties										
Charge	Avg Bill Rate All Counties	Alexander	Davidson	Davie	Iredell	Bladen	Brunswick	Columbus	Wake	Average of County Average
DFel	\$69.34	\$86.96	\$87.06	\$78.44	\$85.59	\$81.09	\$75.47	\$75.05	\$60.93	\$78.82
DWI	\$70.58	\$79.33	\$84.56	\$89.33	\$92.22	\$70.00	\$67.44	\$79.00	\$59.11	\$77.62
GAL	\$72.99	\$89.21	\$87.54		\$50.00				\$60.13	\$71.72
Incom	\$64.25		\$91.08	\$60.00	\$55.87		\$83.80	\$80.00	\$59.88	\$71.77
InvC	\$110.70		\$133.14		\$102.46		\$71.74		\$56.77	\$91.03
JuvD	\$74.55	\$88.15	\$88.91	\$113.21	\$99.98	\$80.31	\$78.65	\$75.85	\$61.14	\$85.78
Mis	\$72.14				\$91.94		\$76.92	\$76.39	\$59.72	\$76.24
NAD	\$80.58	\$91.98	\$90.70	\$92.76	\$94.71	\$70.00	\$77.58	\$77.41	\$59.83	\$81.87
NonS	\$80.81	\$73.59	\$87.18	\$66.67	\$86.64	\$72.38	\$70.26	\$86.06	\$53.33	\$74.51
Oth	\$67.92			\$81.78				\$74.29	\$61.92	\$72.66
PV	\$69.94	\$64.23	\$88.79		\$87.24	\$70.00		\$72.50	\$58.79	\$73.59
Unk	\$64.26						\$70.00	\$94.12	\$58.33	\$74.15
<b>Average</b>	<b>\$74.84</b>	<b>\$81.92</b>	<b>\$93.22</b>	<b>\$83.17</b>	<b>\$84.66</b>	<b>\$73.96</b>	<b>\$74.65</b>	<b>\$79.07</b>	<b>\$59.16</b>	<b>\$78.73</b>

FY02 District Court Fee App Study										
Average Total Fee App Paid by Type of Crime, District Court, Sample Counties										
Charge	Avg Total Fee All Counties	Alexander	Davidson	Davie	Iredell	Bladen	Brunswick	Columbus	Wake	
DFel	\$241.04	\$170.83	\$304.13	\$272.44	\$270.15	\$177.73	\$1,111.50	\$291.39	\$193.99	
DWI	\$227.75	\$152.00	\$321.35	\$216.00	\$274.55	\$210.00	\$197.13	\$180.00	\$211.90	
GAL	\$770.00	\$5,415.00	\$153.25		\$100.00				\$393.00	
Incom	\$219.86		\$415.18	\$150.00	\$117.49		\$281.25	\$100.00	\$204.31	
InvC	\$86.93		\$103.06		\$150.00		\$85.63	\$50.00	\$68.60	
JuvD	\$217.90	\$262.82	\$169.97	\$226.06	\$267.45	\$295.52	\$264.85	\$269.41	\$192.03	
Mis	\$203.80				\$227.86		\$400.00	\$236.09	\$179.46	
NAD	\$402.27	\$2,587.33	\$288.13	\$325.75	\$406.87	\$154.00	\$514.24	\$847.96	\$303.47	
NonS	\$223.57	\$238.40	\$222.33	\$300.00	\$185.53	\$272.19	\$262.23	\$244.77	\$223.67	
Oth	\$102.67			\$117.33				\$260.00	\$77.50	
PV	\$180.35	\$70.00	\$308.00		\$207.69	\$329.00		\$165.00	\$153.57	
Unknown	\$272.78						\$245.00	\$160.00	\$292.86	

# Attachment C

District Court Fee App Study: Key Information									
PAC Felony									
	Hours per Fee App	Hourly Rate per Fee App	PAC Total Fee in	Flat Fee (Hrs x Rate)	No. Fee Apps in Sample	Total Cost for Sample	Cost Change in Study	No Fee Apps FY00	Total Cost FY00
Average	3.5	\$69	\$239	\$241	561	\$134,212			
Median	3.0	\$60	\$200	\$180	561	\$134,212			
Fee Survey	5.5			\$453	561	\$253,998	(\$119,786)	11,077	\$5,015,223
Appeal Rate	3.5	\$60		\$209	561	\$117,137	\$17,075	11,077	\$2,312,878
Staff Rec.	3.5	\$70		\$245	561	\$137,445	(\$3,233)	11,077	\$2,713,865
							<b>Total Cost in FY00</b>		\$2,683,090
PAC Misdemeanor									
	Hours per Fee App	Hourly Rate per Fee App	PAC Total Fee in	Fee Based on Rate/Hrs	No. Study Fee Apps	Total Cost for Sample	Cost Change in Study	No Fee Apps FY00	Total Cost FY00
Average	3	\$72	\$205	\$216	604	\$123,611			
Median	2.5	\$65	\$180	\$163	604	\$123,611			
Fee Survey	3.3	\$80		\$265	604	\$159,934	(\$36,323)	31,239	\$8,271,837.29
Appeal Rate	3	\$60		\$180	604	\$108,720	\$14,891	31,239	\$5,623,020
Staff Rec.	3	\$70		\$210	604	\$126,840	(\$3,229)	31,239	\$6,560,190
							<b>Total Cost in FY00</b>		\$5,826,111
PAC DWI									
	Hours per Fee App	Hourly Rate per Fee App	PAC Total Fee in	Flat Fee (Hrs x Rate)	No. Fee Apps in Sample	Total Cost for Sample	Cost Change in Study	No Fee Apps FY00	Total Cost FY00
Average	3.3	\$71	\$228	\$230	98	\$22,320			
Median	3.0	\$62	\$200	\$186	98	\$22,320			
Fee Survey	4.1	\$84		\$334	98	\$32,697	(\$10,377)	12	\$4,004
Appeal Rate	3.3	\$60		\$198	98	\$19,404	\$2,916	12	\$2,376
Staff Rec.	3.3	\$70		\$231	98	\$22,638	-\$319	12	\$2,772
							<b>Total Cost in FY00</b>		\$3,045
PAC Probation Violation									
	Hours per Fee App	Hourly Rate per Fee App	PAC Total Fee in	Flat Fee (Hrs x Rate)	No. Fee Apps in Sample	Total Cost for Sample	Cost Change in Study	No Fee Apps FY00	Total Cost FY00*
Average	2.6	\$70	\$180	\$184	54	\$22,320			
Median	2.4	\$60	\$150	\$144	54	\$22,320			
Fee Survey	4.1	\$83		\$334	54	\$18,017	\$4,303	unknown	
Appeal Rate	2.6	\$60		\$156	54	\$8,424	\$13,896	unknown	
Staff Rec.	2.6	\$70		\$182	54	\$9,828	\$12,492	unknown	
							<b>Total Cost in FY00</b>		
PAC Non-Support									
	Hours per Fee App	Hourly Rate per Fee App	PAC Total Fee in	Flat Fee (Hrs x Rate)	No. Fee Apps in Sample	Total Cost for Sample	Cost Change in Study	No Fee Apps FY00	Total Cost FY00*
Average	3.0	\$81	\$230	\$246	112	\$25,711			
Median	2.4	\$80	\$192	\$192	112	\$25,711			
Fee Survey	3.0	\$81		\$238	112	\$26,705	(\$994)	5,365	\$1,279,215
Appeal Rate	3.0	\$60		\$180	112	\$20,160	\$5,551	5,365	\$965,700
Staff Rec.	3.0	\$70		\$210	112	\$23,520	\$2,191	5,365	\$1,126,650
							<b>Total Cost in FY00</b>		\$933,851
PAC Involuntary Commitment									
	Hours per Fee App	Hourly Rate per Fee App	PAC Total Fee in	Flat Fee (Hrs x Rate)	No. Fee Apps in Sample	Total Cost for Sample	Cost Change in Study	No Fee Apps FY00	Total Cost FY00*
Average	1.1	\$111	\$107	\$126	28	\$2,986			
Median	1.0	\$100	\$100	\$100	28	\$2,986			
Fee Survey	3.0	\$76		\$204	28	\$5,716	(\$2,730)	4,377	\$893,608
Appeal Rate	1.1	\$60		\$66	28	\$1,848	\$1,138	4,377	\$288,882
Staff Rec.	1.1	\$70		\$77	28	\$2,156	\$830	4,377	\$337,029
							<b>Total Cost in FY00</b>		\$401,481
PAC Withdrawal									
	Hours per Fee App	Hourly Rate per Fee App	PAC Total Fee in	Flat Fee (Hrs x Rate)	No. Fee Apps in Sample	Total Cost for Sample	Cost Change in Study	No Fee Apps FY00	Total Cost FY00*
Average	2.3	\$73	\$170	\$171	54	\$9,197			
Median	2.0	\$60	\$120	\$120	54	\$9,197			
Fee Survey	1.3	\$86		\$238	54	\$12,876	(\$3,679)	unknown	
Appeal Rate	2.3	\$60		\$138	54	\$7,452	\$1,745	unknown	
Staff Rec.	2.3	\$70		\$161	54	\$8,694	\$503	unknown	
							<b>Total Cost in FY00</b>		

**Number of Fee Apps In FY02 District Court Fee Study by County and District**

Three sample counties were selected based on cost-of-living. Crime categories with very large N were sampled. When the county's n was small it was supplemented with fee apps from other counties in the same district as time permitted. No statistical sampling methodology was used. The three selected counties were:

Wake: high cost  
 Iredell: mid cost  
 Columbus: low cost

County	Total No.	District Felony*	DWI	Guardian Ad Litem	Incomp.	Invol. Comm.	Juv. Delinq.	Mis.	Neglect/ Abuse/ Depend.	NonSup.	Other	Prob. Viol.	Unknown Charge	W/drawals*	% in District Charge Unknown
Alexander	39	6	5	1			11		3	10		3		2	
Iredell	404	59	11	1	6	2	38	180	56	38		13		10	
Davidson	225	71	13	4	7	18	32		51	24		5		1	
Davie	51	20	5		1		17		4	1	3			1	
District 22	719	156	34	6	14	20	98	180	114	73	3	21	0	14	0.0%
Bladen	47	11	1				25		1	8		1		3	
Brunswick	111	10	8		4	10	26	2	34	16			1	1	
Columbus	184	38	5		1	1	17	101	4	11	1	4	1	2	
District 13	342	59	14	0	5	11	68	103	39	35	1	5	2	6	0.6%
Wake	1,201	347	50	4	52	20	195	328	61	101	8	28	7	34	
District 10	1,201	347	50	4	52	20	195	328	61	101	8	28	7	34	0.6%
<b>Total</b>	<b>2,262</b>	<b>562</b>	<b>98</b>	<b>10</b>	<b>71</b>	<b>51</b>	<b>361</b>	<b>611</b>	<b>214</b>	<b>209</b>	<b>12</b>	<b>54</b>	<b>9</b>	<b>54</b>	<b>0.4%</b>

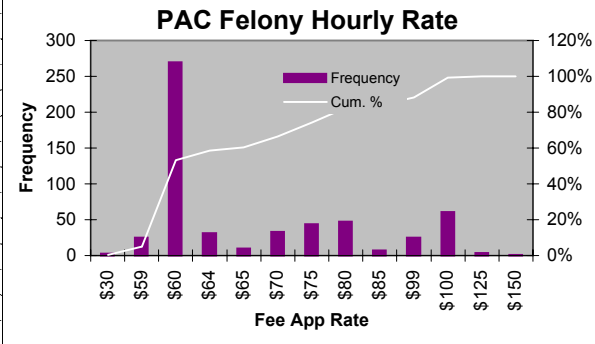
\*All fee apps in primary county included in study, additional fee apps from other counties were included as time permitted

Note: withdrawal fee apps do not add to the overall total because it is a disposition and not a charge.

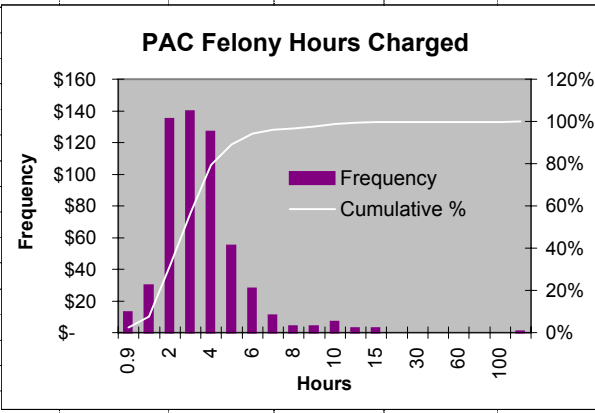
Sampled Crimes Types	Data Not Entered	Data Entered	% Entered
Wake Felony Cases	362	347	48.9%
Wake Misdemeanor	1092	328	23.1%
Wake Juv. Delinquer	163	195	54.5%
Davidson Juv. Del.	31	32	50.8%
Davidson Abuse/Neg	50	51	50.5%

**FY02 District Court Fee App Study  
Felony Fee App Key Informator**

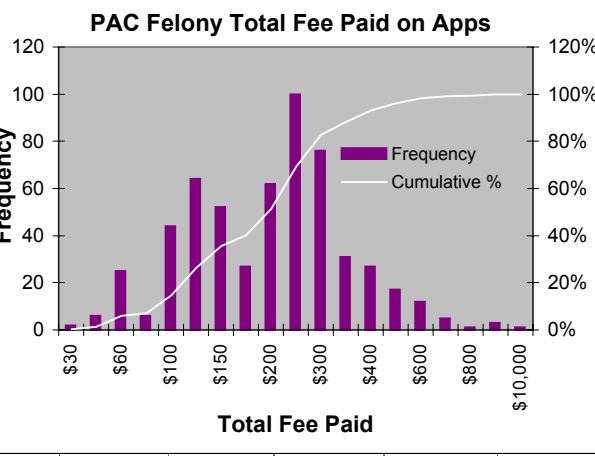
Hrly Rate	Frequency	% All Apps	Cum. %
\$30	3	0.5%	53%
\$59	25	4.5%	4.99%
\$60	270	48.1%	53.12%
\$64	31	5.5%	58.65%
\$65	10	1.8%	60.43%
\$70	33	5.9%	66.31%
\$75	44	7.8%	74.15%
\$80	47	8.4%	82.53%
\$85	7	1.2%	83.78%
\$99	25	4.5%	88.24%
\$100	61	10.9%	99.11%
\$125	4	0.7%	99.82%
\$150	1	0.2%	100.00%
<b>Total</b>	<b>561</b>	<b>100%</b>	<b>100%</b>



Hrs	Frequency	% All Apps	Cum. %
0.9	13	2.3%	2.32%
1	30	5.3%	7.66%
2	135	24.1%	31.73%
3	140	25.0%	56.68%
4	127	22.6%	79.32%
5	55	9.8%	89.13%
6	28	5.0%	94.12%
7	11	2.0%	96.08%
8	4	0.7%	96.79%
9	4	0.7%	97.50%
10	7	1.2%	98.75%
12	3	0.5%	99.29%
15	3	0.5%	99.82%
20	0	0.0%	99.82%
30	0	0.0%	99.82%
50	0	0.0%	99.82%
60	0	0.0%	99.82%
75	0	0.0%	99.82%
100	0	0.0%	99.82%
124	1	0.2%	100.00%
<b>Total</b>	<b>561</b>	<b>100%</b>	<b>100%</b>



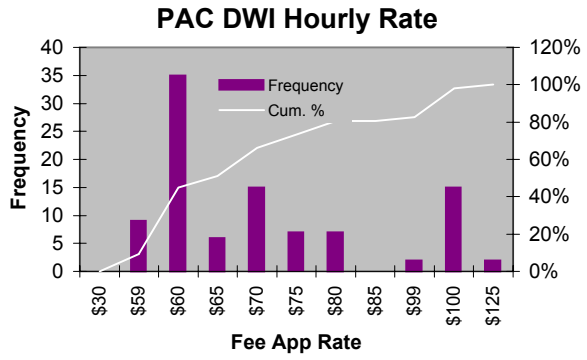
Total Fee	Frequency	% All Apps	Cum. %
\$30	2	0.4%	.36%
\$59	6	1.1%	1.43%
\$60	25	4.5%	5.88%
\$75	6	1.1%	6.95%
\$100	44	7.8%	14.80%
\$125	64	11.4%	26.20%
\$150	52	9.3%	35.47%
\$175	27	4.8%	40.29%
\$200	62	11.1%	51.34%
\$250	100	17.8%	69.16%
\$300	76	13.5%	82.71%
\$350	31	5.5%	88.24%
\$400	27	4.8%	93.05%
\$500	17	3.0%	96.08%
\$600	12	2.1%	98.22%
\$700	5	0.9%	99.11%
\$800	1	0.2%	99.29%
\$900	3	0.5%	99.82%
\$1,000	1	0.2%	100.00%
<b>Total</b>	<b>561</b>	<b>100.0%</b>	<b>100.0%</b>



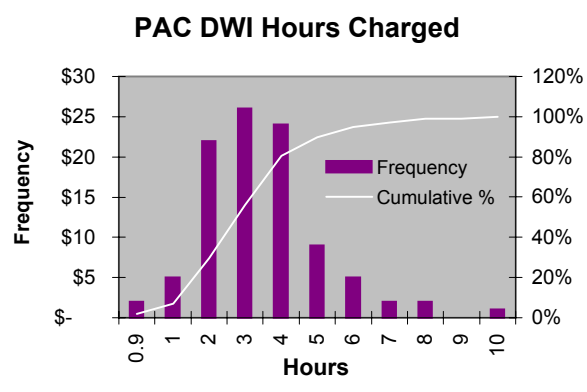
	Hours per Fee App	Hourly Rate per Fee App	PAC Total Fee in Sample	Flat Fee (Hrs x Rate)	No. Fee Apps in Sample	Total Cost for Sample	Cost Change in Study	No Fee Apps FY00	Total Cost FY00
Average	3.5	\$69	\$239	\$241	561	\$134,212			
Median	3.0	\$60	\$200	\$180	561	\$134,212			
Fee Survey	5.5			\$453	561	\$253,998	(\$119,786)	11,077	\$5,015,223
Appeal Rate	3.5	\$60		\$209	561	\$117,137	\$17,075	11,077	\$2,312,878
Staff Rec.	3.5	\$70		\$245	561	\$137,445	(\$3,233)	11,077	\$2,713,865
<b>Total Cost in FY00</b>									<b>\$2,683,090</b>

**FY02 District Court Fee App Study  
PAC DWI Fee App Key Information**

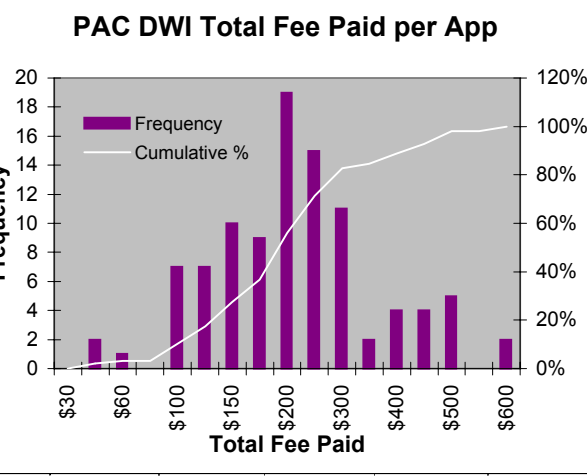
Hrly Rate	Frequency	% All	Cum. %
\$30	0	0.0%	0.0%
\$59	9	9.2%	9.2%
\$60	35	35.7%	44.9%
\$65	6	6.1%	51.0%
\$70	15	15.3%	66.3%
\$75	7	7.1%	73.5%
\$80	7	7.1%	80.6%
\$85	0	0.0%	80.6%
\$99	2	2.0%	82.7%
\$100	15	15.3%	98.0%
\$125	2	2.0%	100.0%
<b>Total</b>	<b>98</b>	<b>100%</b>	<b>100%</b>



Hrs	Frequency	% All	Cum. %
0.9	2	2.0%	2.0%
1	5	5.1%	7.1%
2	22	22.4%	29.6%
3	26	26.5%	56.1%
4	24	24.5%	80.6%
5	9	9.2%	89.8%
6	5	5.1%	94.9%
7	2	2.0%	96.9%
8	2	2.0%	99.0%
9	0	0.0%	99.0%
10	1	1.0%	100.0%
<b>Total</b>	<b>98</b>	<b>100%</b>	<b>100%</b>



Total Fee	Frequency	% All	Cum. %
\$30	0	0.0%	0.0%
\$59	2	2.0%	2.0%
\$60	1	1.0%	3.1%
\$75	0	0.0%	3.1%
\$100	7	7.1%	10.2%
\$125	7	7.1%	17.3%
\$150	10	10.2%	27.6%
\$175	9	9.2%	36.7%
\$200	19	19.4%	56.1%
\$250	15	15.3%	71.4%
\$300	11	11.2%	82.7%
\$350	2	2.0%	84.7%
\$400	4	4.1%	88.8%
\$450	4	4.1%	92.9%
\$500	5	5.1%	98.0%
\$550	0	0.0%	98.0%
\$600	2	2.0%	100.0%
<b>Total</b>	<b>98</b>	<b>100.0%</b>	<b>100.0%</b>



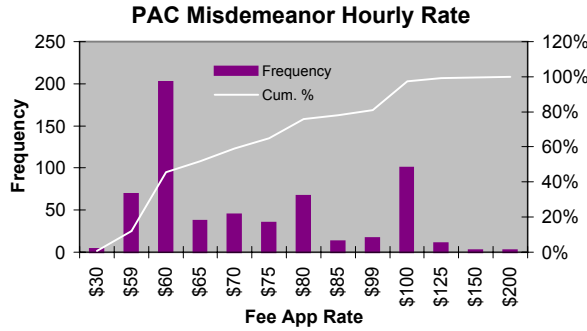
	Hours per Fee App	Hourly Rate per Fee App	PAC Total Fee in Sample	Flat Fee (Hrs x Rate)	No. Fee Apps in Sample	Total Cost for Sample	Cost Change in Study	No Fee Apps FY00	Total Cost FY00
Average	3.3	\$71	\$228	\$230	98	\$22,320			
Median	3.0	\$62	\$200	\$186	98	\$22,320			
Fee Survey	4.1	\$84		\$334	98	\$32,697	(\$10,377)	12	\$4,004
Appeal Rate	3.3	\$60		\$198	98	\$19,404	\$2,916	12	\$2,376
Staff Rec.	3.3	\$70		\$231	98	\$22,638	-\$319	12	\$2,772
						<b>Total Cost in FY00</b>			<b>\$3,045</b>



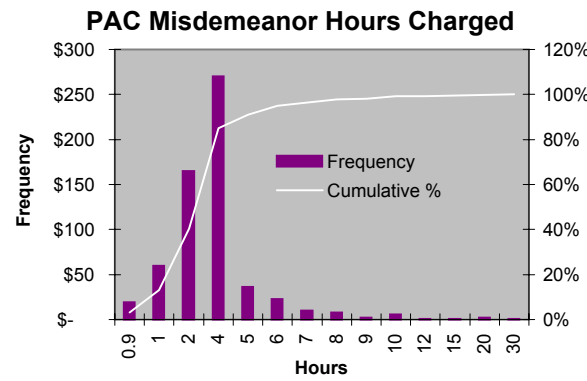
**FY02 District Court Fee App Study**

**PAC Misdemeanor Fee App Key Information**

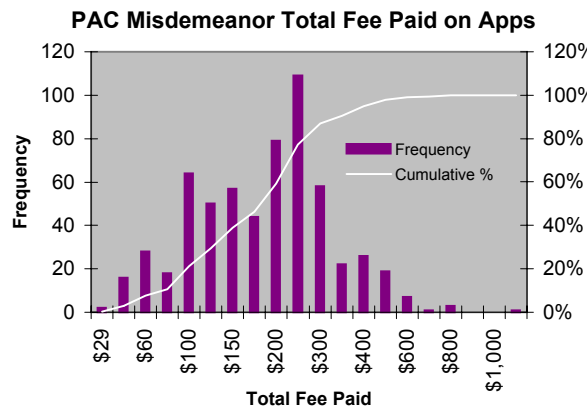
Hrly Rate	Frequenc	% All	Cum. %
\$30	4	1%	1%
\$59	69	11%	12%
\$60	202	33%	46%
\$65	37	6%	52%
\$70	45	7%	59%
\$75	35	6%	65%
\$80	67	11%	76%
\$85	13	2%	78%
\$99	17	3%	81%
\$100	100	17%	98%
\$125	11	2%	99%
\$150	2	0%	100%
\$200	2	0%	100%
<b>Total</b>	<b>604</b>	<b>100%</b>	<b>100%</b>



Hrs	Frequenc	% All	Cum. %
0.9	19	3%	3%
1	60	13%	13%
2	165	40%	40%
4	270	85%	85%
5	36	91%	91%
6	23	95%	95%
7	10	97%	97%
8	8	98%	98%
9	2	98%	98%
10	6	99%	99%
12	1	99%	99%
15	1	100%	100%
20	2	100%	100%
30	1	100%	100%
<b>Total</b>	<b>604</b>	<b>100%</b>	<b>100%</b>



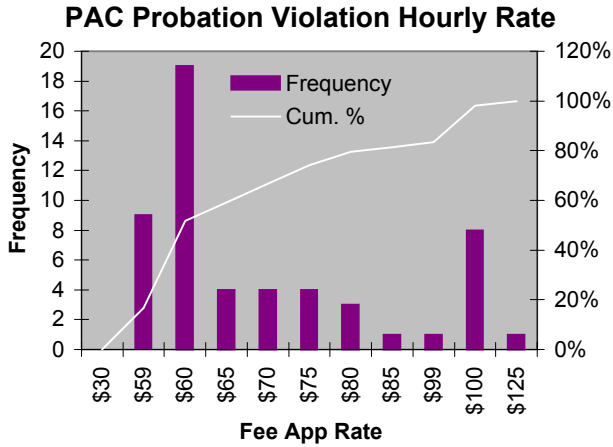
Total Fee	Frequenc	% All	Cum. %
\$29	2	0.3%	0.3%
\$59	16	2.6%	3.0%
\$60	28	4.6%	7.6%
\$75	18	3.0%	10.6%
\$100	64	10.6%	21.2%
\$125	50	8.3%	29.5%
\$150	57	9.4%	38.9%
\$175	44	7.3%	46.2%
\$200	79	13.1%	59.3%
\$250	109	18.0%	77.3%
\$300	58	9.6%	86.9%
\$350	22	3.6%	90.6%
\$400	26	4.3%	94.9%
\$500	19	3.1%	98.0%
\$600	7	1.2%	99.2%
\$700	1	0.2%	99.3%
\$800	3	0.5%	99.8%
\$900	0	0.0%	99.8%
\$1,000	0	0.0%	99.8%
\$1,500	1	0.2%	100.0%
<b>Total</b>	<b>604</b>	<b>100.0%</b>	<b>100.0%</b>



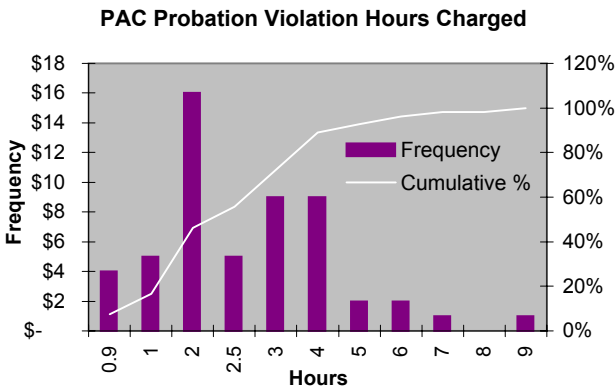
	Hours per Fee App	Hourly Rate per Fee App	PAC Total Fee in Study	Fee Based on Rate/Hrs	No. Study Fee Apps	Study Total Cost	Cost Change in Study	No Fee Apps FY00	Total Cost FY00
Average	3	\$72	\$205	\$216	604	\$123,611			
Median	2.5	\$65	\$180	\$163	604	\$123,611			
Fee Survey	3.3	\$80		\$265	604	\$159,934	(\$36,323)	31,239	\$8,271,837.29
Appeal Rate	3	\$60		\$180	604	\$108,720	\$14,891	31,239	\$5,623,020
Staff Rec.	3	\$70		\$210	604	\$126,840	(\$3,229)	31,239	\$6,560,190

**FY02 District Court Fee App Study  
PAC Probation Violation Fee App Key Information**

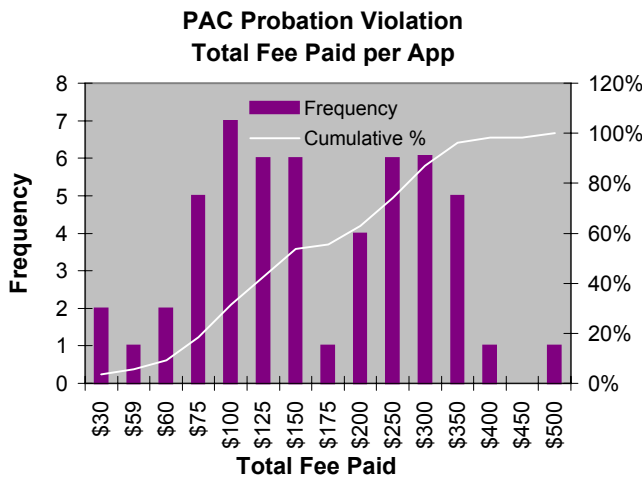
Hrly Rate	Frequency	% All	Cum. %
\$30	0	0.0%	0.0%
\$59	9	16.7%	16.7%
\$60	19	35.2%	51.9%
\$65	4	7.4%	59.3%
\$70	4	7.4%	66.7%
\$75	4	7.4%	74.1%
\$80	3	5.6%	79.6%
\$85	1	1.9%	81.5%
\$99	1	1.9%	83.3%
\$100	8	14.8%	98.1%
\$125	1	1.9%	100.0%
<b>Total</b>	<b>54</b>	<b>100%</b>	<b>100%</b>



Hrs	Frequency	% All	Cum. %
0.9	4	7.4%	7.41%
1	5	9.3%	16.67%
2	16	29.6%	46.30%
2.5	5	9.3%	55.56%
3	9	16.7%	72.22%
4	9	16.7%	88.89%
5	2	3.7%	92.59%
6	2	3.7%	96.30%
7	1	1.9%	98.15%
8	0	0.0%	98.15%
9	1	1.9%	100.00%
<b>Total</b>	<b>54</b>	<b>100%</b>	<b>100%</b>



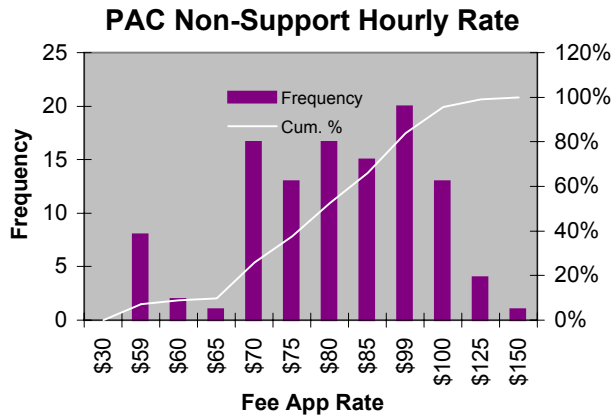
Total Fee	Frequency	% All	Cum. %
\$30	2	3.7%	3.7%
\$59	1	1.9%	5.6%
\$60	2	3.7%	9.3%
\$75	5	9.3%	18.5%
\$100	7	13.0%	31.5%
\$125	6	11.1%	42.6%
\$150	6	11.1%	53.7%
\$175	1	1.9%	55.6%
\$200	4	7.4%	63.0%
\$250	6	11.1%	74.1%
\$300	7	13.0%	87.0%
\$350	5	9.3%	96.3%
\$400	1	1.9%	98.1%
\$450	0	0.0%	98.1%
\$500	1	1.9%	100.0%
<b>Total</b>	<b>54</b>	<b>100.0%</b>	<b>100.0%</b>



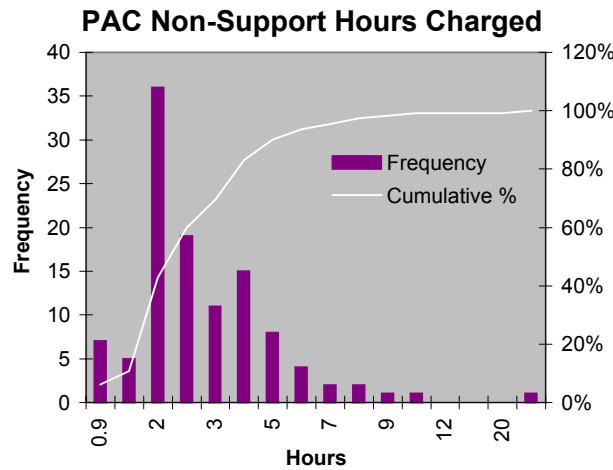
	Hours per Fee App	Hourly Rate per Fee App	PAC Total Fee in Sample	Flat Fee (Hrs x Rate)	No. Fee Apps in Sample	Total Cost for Sample	Cost Change in Study	No Fee Apps FY00	Total Cost FY00*
Average	2.6	\$70	\$180	\$184	54	\$22,320			
Median	2.4	\$60	\$150	\$144	54	\$22,320			
Fee Survey	4.1	\$83		\$334	54	\$18,017	\$4,303	unknown	
Appeal Rate	2.6	\$60		\$156	54	\$8,424	\$13,896	unknown	
Staff Rec.	2.6	\$70		\$182	54	\$9,828	\$12,492	unknown	
							<b>Total Cost in FY00</b>		

**FY02 District Court Fee App Study  
PAC Non-Support Fee App Key Information**

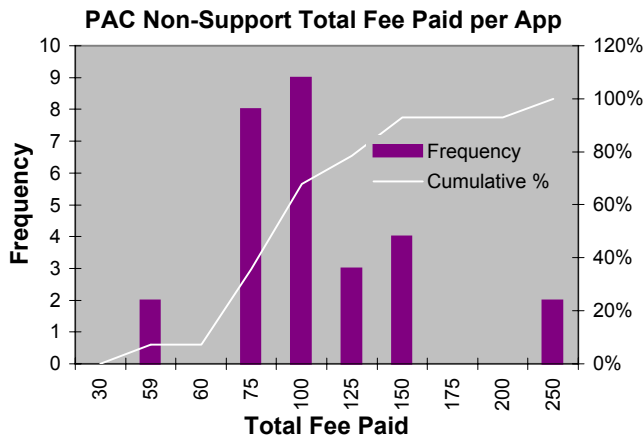
Hrly Rate	Frequenc	% All	Cum. %
\$30	0	0.0%	0.0%
\$59	8	7.1%	7.1%
\$60	2	1.8%	8.9%
\$65	1	0.9%	9.8%
\$70	18	16.1%	25.9%
\$75	13	11.6%	37.5%
\$80	17	15.2%	52.7%
\$85	15	13.4%	66.1%
\$99	20	17.9%	83.9%
\$100	13	11.6%	95.5%
\$125	4	3.6%	99.1%
\$150	1	0.9%	100.0%
<b>Total</b>	<b>112</b>	<b>100%</b>	<b>100%</b>



Hrs	Frequenc	% All	Cum. %
0.9	7	6.3%	6.3%
1	5	4.5%	10.7%
2	36	32.1%	42.9%
2.5	19	17.0%	59.8%
3	11	9.8%	69.6%
4	15	13.4%	83.0%
5	8	7.1%	90.2%
6	4	3.6%	93.8%
7	2	1.8%	95.5%
8	2	1.8%	97.3%
9	1	0.9%	98.2%
10	1	0.9%	99.1%
12	0	0.0%	99.1%
15	0	0.0%	99.1%
20	0	0.0%	99.1%
30	1	0.9%	100.0%
<b>Total</b>	<b>112</b>	<b>100%</b>	<b>100%</b>



Total Fee	Frequenc	% All	Cum. %
30	0	0.0%	0.0%
59	2	7.1%	7.1%
60	0	0.0%	7.1%
75	8	28.6%	35.7%
100	9	32.1%	67.9%
125	3	10.7%	78.6%
150	4	14.3%	92.9%
175	0	0.0%	92.9%
200	0	0.0%	92.9%
250	2	7.1%	100.0%
<b>Total</b>	<b>28</b>	<b>100.0%</b>	<b>100.0%</b>

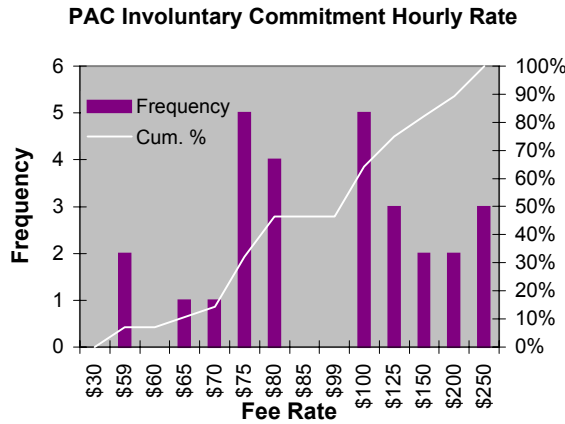


	Hours per Fee App	Hourly Rate per Fee App	PAC Total Fee in Sample	Flat Fee (Hrs x Rate)	No. Fee Apps in Sample	Total Cost for Sample	Cost Change in Study	No Fee Apps FY00	Total Cost FY00*
Average	3.0	\$81	\$230	\$246	112	\$25,711			
Median	2.4	\$80	\$192	\$192	112	\$25,711			
Fee Survey	3.0	\$81	\$238	\$238	112	\$26,705	(\$994)	5,365	\$1,279,215
Appeal Rate	3.0	\$60	\$180	\$180	112	\$20,160	\$5,551	5,365	\$965,700
Staff Rec.	3.0	\$70	\$210	\$210	112	\$23,520	\$2,191	5,365	\$1,126,650
<b>Total Cost in FY00</b>									<b>\$933,851</b>

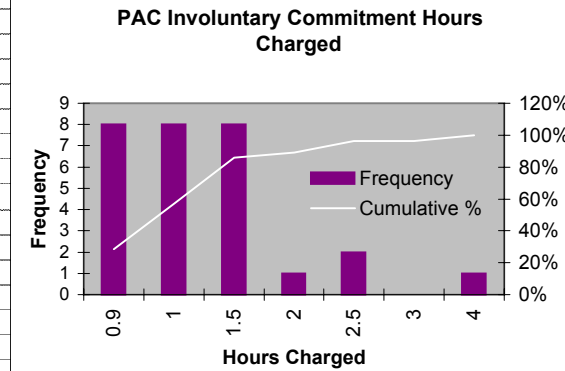
**FY02 District Court Fee App Study**

**PAC Involuntary Commitment Fee App Key Information**

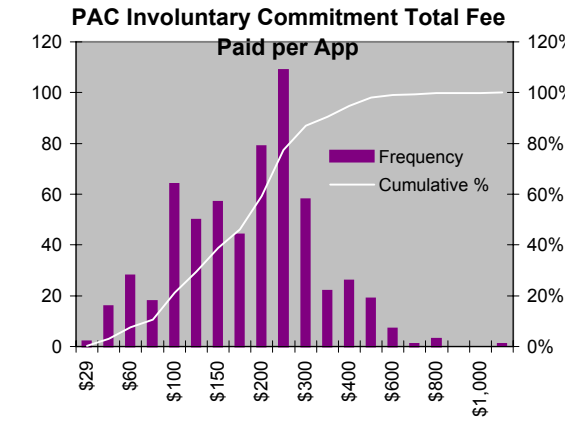
Hrly Rate	Frequenc	% All	Cum. %
\$30	0	0.0%	0.0%
\$59	2	7.1%	7.1%
\$60	0	0.0%	7.1%
\$65	1	3.6%	10.7%
\$70	1	3.6%	14.3%
\$75	5	17.9%	32.1%
\$80	4	14.3%	46.4%
\$85	0	0.0%	46.4%
\$99	0	0.0%	46.4%
\$100	5	17.9%	64.3%
\$125	3	10.7%	75.0%
\$150	2	7.1%	82.1%
\$200	2	7.1%	89.3%
\$250	3	10.7%	100.0%
<b>Total</b>	<b>28</b>	<b>100%</b>	<b>100%</b>



Hrs	Frequenc	% All	Cum. %
0.9	8	28.6%	28.6%
1	8	28.6%	57.1%
1.5	8	28.6%	85.7%
2	1	3.6%	89.3%
2.5	2	7.1%	96.4%
3	0	0.0%	96.4%
4	1	3.6%	100.0%
<b>Total</b>	<b>28</b>	<b>100%</b>	<b>100%</b>



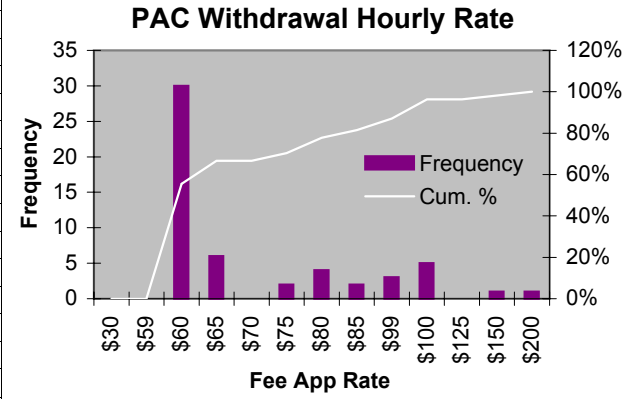
Total Fee	Frequenc	% All	Cum. %
\$29	2	0.3%	0.3%
\$59	16	2.6%	3.0%
\$60	28	4.6%	7.6%
\$75	18	3.0%	10.6%
\$100	64	10.6%	21.2%
\$125	50	8.3%	29.5%
\$150	57	9.4%	38.9%
\$175	44	7.3%	46.2%
\$200	79	13.1%	59.3%
\$250	109	18.0%	77.3%
\$300	58	9.6%	86.9%
\$350	22	3.6%	90.6%
\$400	26	4.3%	94.9%
\$500	19	3.1%	98.0%
\$600	7	1.2%	99.2%
\$700	1	0.2%	99.3%
\$800	3	0.5%	99.8%
\$900	0	0.0%	99.8%
\$1,000	0	0.0%	99.8%
\$1,500	1	0.2%	100.0%
<b>Total</b>	<b>604</b>	<b>100.0%</b>	<b>100.0%</b>



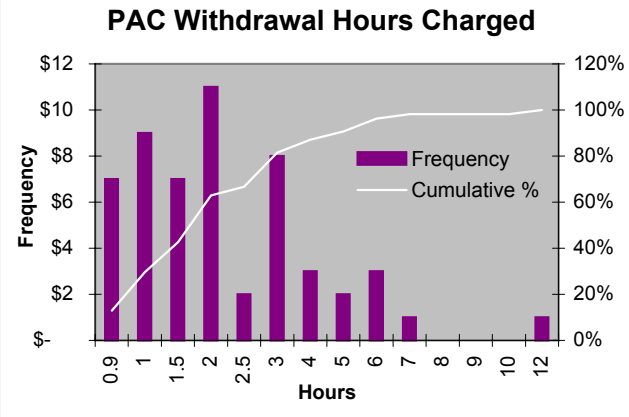
	Hours per Fee App	Hourly Rate per Fee App	PAC Total Fee in Sample	Flat Fee (Hrs x Rate)	No. Fee Apps in Sample	Total Cost for Sample	Cost Change in Study	No Fee Apps FY00	Total Cost FY00*
Average	1.1	\$111	\$107	\$126	28	\$2,986			
Median	1.0	\$100	\$100	\$100	28	\$2,986			
Fee Survey	3.0	\$76	\$204	\$204	28	\$5,716	(\$2,730)	4,377	\$893,608
Appeal Rate	1.1	\$60	\$66	\$66	28	\$1,848	\$1,138	4,377	\$288,882
Staff Rec.	1.1	\$70	\$77	\$77	28	\$2,156	\$830	4,377	\$337,029
							<b>Total Cost in FY00</b>		<b>\$401,481</b>

**FY02 District Court Fee App Study  
PAC Withdrawal Fee App Key Information**

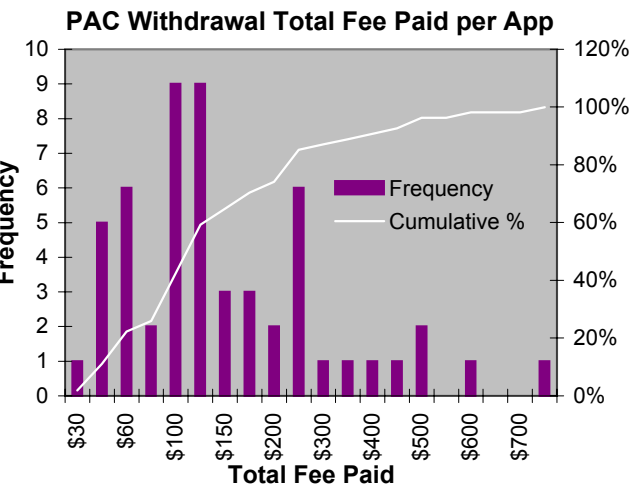
Hrly Rate	Frequenc	% All	Cum. %
\$30	0	0.0%	0.0%
\$59	0	0.0%	0.0%
\$60	30	55.6%	55.6%
\$65	6	11.1%	66.7%
\$70	0	0.0%	66.7%
\$75	2	3.7%	70.4%
\$80	4	7.4%	77.8%
\$85	2	3.7%	81.5%
\$99	3	5.6%	87.0%
\$100	5	9.3%	96.3%
\$125	0	0.0%	96.3%
\$150	1	1.9%	98.1%
\$200	1	1.9%	100.0%
<b>Total</b>	<b>54</b>	<b>1</b>	<b>100%</b>



Hrs	Frequenc	% All	Cum. %
0.9	7	13.0%	13.0%
1	9	16.7%	29.6%
1.5	7	13.0%	42.6%
2	11	20.4%	63.0%
2.5	2	3.7%	66.7%
3	8	14.8%	81.5%
4	3	5.6%	87.0%
5	2	3.7%	90.7%
6	3	5.6%	96.3%
7	1	1.9%	98.1%
8	0	0.0%	98.1%
9	0	0.0%	98.1%
10	0	0.0%	98.1%
12	1	1.9%	100.0%
<b>Total</b>	<b>54</b>	<b>1</b>	<b>100%</b>



Total Fee	Frequenc	% All	Cum. %
\$30	1	1.9%	1.9%
\$59	5	9.3%	11.1%
\$60	6	11.1%	22.2%
\$75	2	3.7%	25.9%
\$100	9	16.7%	42.6%
\$125	9	16.7%	59.3%
\$150	3	5.6%	64.8%
\$175	3	5.6%	70.4%
\$200	2	3.7%	74.1%
\$250	6	11.1%	85.2%
\$300	1	1.9%	87.0%
\$350	1	1.9%	88.9%
\$400	1	1.9%	90.7%
\$450	1	1.9%	92.6%
\$500	2	3.7%	96.3%
\$550	0	0.0%	96.3%
\$600	1	1.9%	98.1%
\$650	0	0.0%	98.1%
\$700	0	0.0%	98.1%
\$800	1	1.9%	100.0%
<b>Total</b>	<b>54</b>	<b>1</b>	<b>100.0%</b>



	Hours per Fee App	Hourly Rate per Fee App	PAC Total Fee in Sample	Flat Fee (Hrs x Rate)	No. Fee Apps in Sample	Total Cost for Sample	Cost Change in Study	No Fee Apps FY00	Total Cost FY00*
Average	2.3	\$73	\$170	\$171	54	\$9,197			
Median	2.0	\$60	\$120	\$120	54	\$9,197			
Fee Survey	1.3	\$86		\$238	54	\$12,876	(\$3,679)	unknown	
Appeal Rate	2.3	\$60		\$138	54	\$7,452	\$1,745	unknown	
Staff Rec.	2.3	\$70		\$161	54	\$8,694	\$503	unknown	
<b>Total Cost in FY00</b>									